



GFI MailArchiver

for Exchange

Email archiving of internal and external email

GFI MailArchiver for Exchange provides easy-to-use corporate email archiving, enabling you to centrally archive all internal and external email. GFI MailArchiver allows you to archive past, present and future emails into one or multiple databases, providing both the network administrator and employees with a number of benefits.

- Network administrators can now avoid the pains of PST file management and:
 - Eliminate corrupted PST files and the lengthy troublesome process of 'fixing' them
 - Overcome the risk of PST loss in the case of hardware failure on the employees' workstations
 - Free yourself from complex backup plans to copy PST files from each employee's workstation.
- GFI MailArchiver allows employees to perform the following actions without needing the assistance of a network administrator:
 - Use their browser to easily locate and access all their emails from anywhere in the world
 - Quickly restore emails back to their mailbox through a OneClick Restore process, avoiding the cumbersome process of retrieving an email from a backup tape or disk, saving the network administrator's time.

In addition, GFI MailArchiver also aids in fulfilling regulatory email storage requirements (such as the Sarbanes-Oxley Act).

Features for the administrator

■ Integration with Exchange and other email servers

GFI MailArchiver leverages the journaling feature of Exchange Server, providing unparalleled scalability and reliability. Other email archiving solutions actually replace the email with a link to their database – this can be a point of failure and can bring down your entire email system. GFI MailArchiver works in parallel and does not touch the way Exchange works. GFI MailArchiver can be used with Exchange as well as other email servers with the capability of polling emails from a mail server which supports IMAP and Active Directory.

Benefits

Why choose GFI MailArchiver?

- Reduce reliance on cumbersome PST files – prone to corruption, loss through hardware failure and requiring complex backup plans
- Provide end-users with a single, web-based location in which to search and restore past emails through a OneClick Restore
- Significantly reduce storage requirements for email by up to 80%
- Increase Exchange performance and ease backup and restoration
- Helps comply with Sarbanes-Oxley, SEC and other regulations.

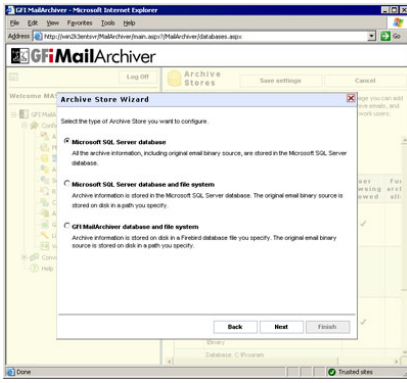
■ Automatically archive corporate email into one storage area

Your mail server is not the ideal place to store all organizational email: Over time this will cause a severe decline in email performance. Moving old emails into a database will keep your mail server performance high and email stores compact. GFI MailArchiver provides three options to archive all your email in a central database:

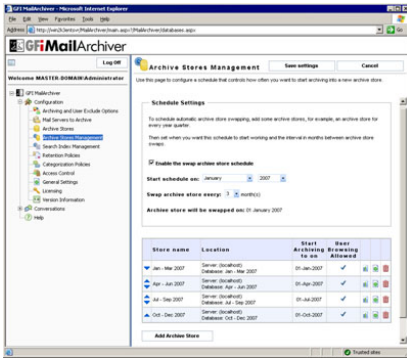
- **An SQL database:** Because email is stored in a standard SQL database, it is easy to backup and restore; no special Exchange backup tools are required. This setup is strongly recommended for high email volume environments.
- **SQL database and NTFS:** This alternative allows you to store email meta data on SQL server, whilst storing emails in MIME format in a folder on an NTFS-formatted hard drive. This setup is also suitable for high email volume environments and allows you to save storage space on your SQL server.
- **Embedded database and NTFS:** This alternative allows you to store email meta data in a database embedded within GFI MailArchiver, whilst storing emails in MIME format in a folder on an NTFS-formatted hard drive. This setup is suitable for low email volume environments and for small enterprises intending to save on license costs of Microsoft SQL Server.

■ Multiple database support and 'automatic' database management support

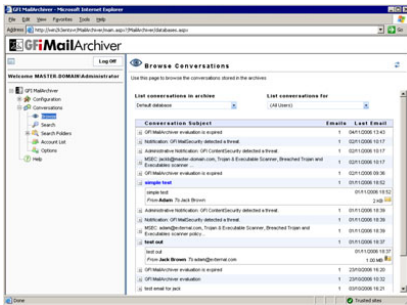
It is possible to archive emails in multiple databases – this overrides the problem of having one large database that becomes slow and requires more maintenance. GFI MailArchiver allows you to automatically archive emails to a new database after a specified time, for example, every month or quarter.



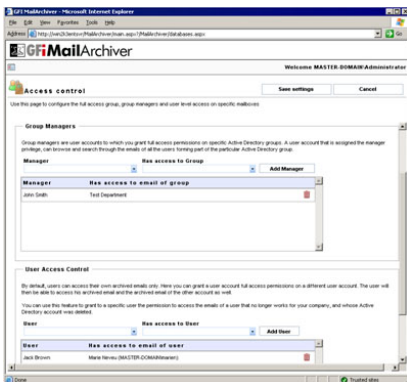
Archive store wizard



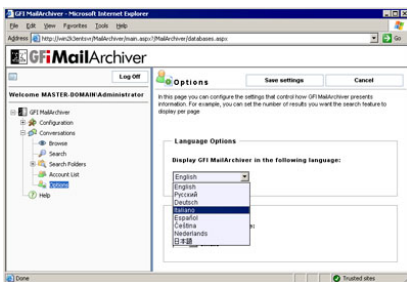
Archive stores management



Display of archived email



Access control



Support for multilingual user interfaces

Reduce email storage requirements

GFI MailArchiver compresses and decompresses attachments on the fly, which results in considerable savings in terms of storage when compared to storing attachments in the Exchange stores. In addition, storing email in a database is more space efficient than storing in PST files. An added advantage is that GFI MailArchiver archives only one copy of attachments sent to multiple recipients.

End PST hell

Using GFI MailArchiver for Exchange eliminates the need for users to archive their mail in PST files on local hard disks. These PST files end up being very large and are difficult to backup and search. Many users do not know how to organize their PST files properly. With GFI MailArchiver, users can browse to the web search interface and retrieve past email from the database, rather than having to dig through a store of PST files on disk to find a particular email.

Set up rules to meet email retention and categorization policies

Setting up an email retention policy is critical and while email archiving is essential, retaining emails for an indefinite time is costly! With GFI MailArchiver you can create rules to delete one or more emails after a specific time, for example, you can delete all emails sent by the Marketing Department that are older than 7 years. In addition, GFI MailArchiver can help you to categorize emails by adding a label to the emails that meet a particular condition.

Helps comply with Sarbanes-Oxley Act

By archiving all company email, GFI MailArchiver helps organizations to meet regulatory compliance such as the Sarbanes-Oxley Act. Under the Sarbanes-Oxley Act 2002 and Security and Exchange Commission (SEC) rules, public companies must prove that their internal controls and audit trails are sound and that their processes are capable of producing certifiably correct data. Companies must retain all correspondence created, sent, or received "in connection with an audit or review" of a public company for a period of seven years, during which time these records must be non-erasable and non-rewritable. This includes any "electronic records" such as email, particularly relating to subjects, departments or individuals involved in auditing procedures. Failure to comply is a crime, punishable by up to 10 years in jail.

Helps to comply to other acts and regulations

GFI MailArchiver is also a valuable tool that aids compliance with the following: E-Comm Act 2000, BS7799-2:2002, Enterprise Act 2002, Decreto del Presidente del Consiglio dei Ministri (8 febbraio 1999) and more.

Give viewing rights and exempt users from archiving email

GFI MailArchiver allows you to grant a user viewing rights to all email relating to a specific Active Directory Group, for example, the Sales Manager would be able to view all emails sent or received by his team. Also, if required, you can instruct GFI MailArchiver for Exchange not to archive email to/from particular users, for instance it is possible not to archive emails sent to/from the HR Manager.

Collect and archive emails in one geographical location

GFI MailArchiver provides the possibility of centralizing email archiving to one physical location by polling emails from multiple locations. For example, an organization that operates in the US, UK and Australia may want to archive email of all offices centrally in one location – the US office.

Features for the user

Access emails from any location through a browser

GFI MailArchiver allows users to access their emails from anywhere in the world by using a browser. Emails that had been deleted may also be seen (and restored).

Advanced email search and 'saved search' capabilities

Having a central store of email enables users to easily search through their past email and attachments (Microsoft Word, Excel, PDF, ZIP and many other formats). Once a search has been defined, the user has the possibility to save the search criteria for easy reference at a later date, similar to Microsoft Outlook Search Folders. For example, you may save a search that displays all email correspondence with client X.

■ **OneClick Restore a single email to a mailbox**

By simply clicking on a button, the user or the administrator can restore an email to a user's inbox in its original format. GFI MailArchiver restores any archived email (even deleted email) and these are resent to the user as an attachment.

■ **Support for multilingual user interfaces**

GFI MailArchiver provides support for multilingual user interfaces including English, Dutch, French, German, Italian, Russian, Spanish, Czech, Arabic, Japanese, Simplified Chinese and Traditional Chinese.

■ **Other features:**

- Printer-friendly support for printing emails

System Requirements

- Windows 2000 (Service Pack 3 or higher) or Windows 2003
- Microsoft .NET Framework 2.0
- Internet Information Services (IIS) – World Wide Web service
- Microsoft Internet Explorer 5.5 or later

Download your evaluation version from <http://www.gfi.com/mailarchiver/>

GFI Software
Unit 2, St. John's Mews
St. John's Rd. Hampton Wick
Kingston-upon-Thames
Surrey KT1 4AN, UK
Tel +44 (0) 870 770 5370
Fax +44 (0) 870 770 5377
sales@gfi.co.uk

GFI Software
15300 Weston Parkway
Suite 104
Cary, NC 27513
USA
Tel +1 (888) 243-4329
Fax +1 (919) 379-3402
sales@gfiusa.com

GFI Software GmbH
Bargkoppelweg 72
22145 Hamburg
Germany
Tel +49(0) 40 3068 1000
Fax +49(0) 700 3068 1010
sales@gfisoftware.de

GFI Asia Pacific Pty Ltd
83 King William Road
Unley 5061
South Australia
Tel +61 8 8273 3000
Fax +61 8 8273 3099
sales@gfiap.com

GFI Software
GFI House
San Andrea Street
San Gwann SGN 05 Malta
Tel +356 21 382418
Fax +356 21 382419
sales@gfi.com

Microsoft
GOLD CERTIFIED
Partner

